

City of Northville  
Municipal Pavement Management System Report  
2013 Update



# APPENDIX B



**220 W. Congress, Suite 400  
Detroit, MI 48226  
Phone: (313) 967-4700  
Fax: (313) 967-4707**

**905 South Blvd. East  
Rochester Hills, MI 48307  
Phone: (248) 844-5400  
Fax: (248) 844-5404**

**10508 Citation Dr., Suite 600**  
**Brighton, MI 48116**  
**Phone: (810) 534-1400**  
**Fax: (810) 534-1402**

[www.sds-eng.com](http://www.sds-eng.com)



NOTE: UTILITY INFORMATION ON THIS DRAWING MAY BE FROM INFORMATION DISCLOSED TO THIS FIRM BY THE VARIOUS UTILITY COMPANIES, CITY/COUNTY AGENCIES AND OTHER VARIOUS SOURCES. UNDERGROUND UTILITIES WHICH ARE ON PRIVATE PROPERTY ARE USUALLY NOT DEPICTED UPON A UTILITY COMPANY'S PUBLISHED PLANS. THEIR LOCATION, IF SHOWN UPON THIS SURVEY, ARE APPROPRIATED FROM FOUND PAINT MARKS/STAKES, ETC. AS LOCATED BY THIS FIRM FROM SOURCES WHICH ARE UNKNOWN. NO GUARANTEE IS GIVEN AS TO THE COMPLETENESS OR ACCURACY THEREOF.

PRIOR TO CONSTRUCTION, ALL LOCATIONS AND DEPTHS OF EXISTING UTILITIES (IN CONFLICT WITH PROPOSED IMPROVEMENTS) SHALL BE VERIFIED IN THE FIELD. CALL MISS DIG 3 WORKING DAYS PRIOR TO CONSTRUCTION.

COPYRIGHT © 2011 SPALDING D&DECKER ASSOCIATES, INC.  
THIS DRAWING AND THE SUBJECT MATTER CONTAINED  
THEREIN IS PROPRIETARY AND IS NOT TO BE USED OR  
REPRODUCED WITHOUT WRITTEN PERMISSION OF  
SPALDING D&DECKER ASSOCIATES, INC.

**CITY OF NORTHVILLE  
PAVEMENT MANAGEMENT  
PROGRAM**

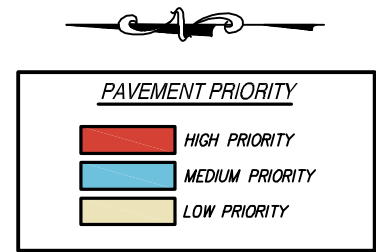
NORTHVILLE, MI

### KEY PLAN

NO.	DATE	REVISION

DRAFTER R. PEERY		DATE —
DESIGNER —		DATE —
CHECKED		DATE —
PROJECT MANAGER —		BID PLAN DATE —
DEPARTMENT MANAGER APPROVAL		DATE —

JOB NO. NP11-040	DRAWING NO. NP11040ST
SCALE: NTC	SHEET NO. C1.0



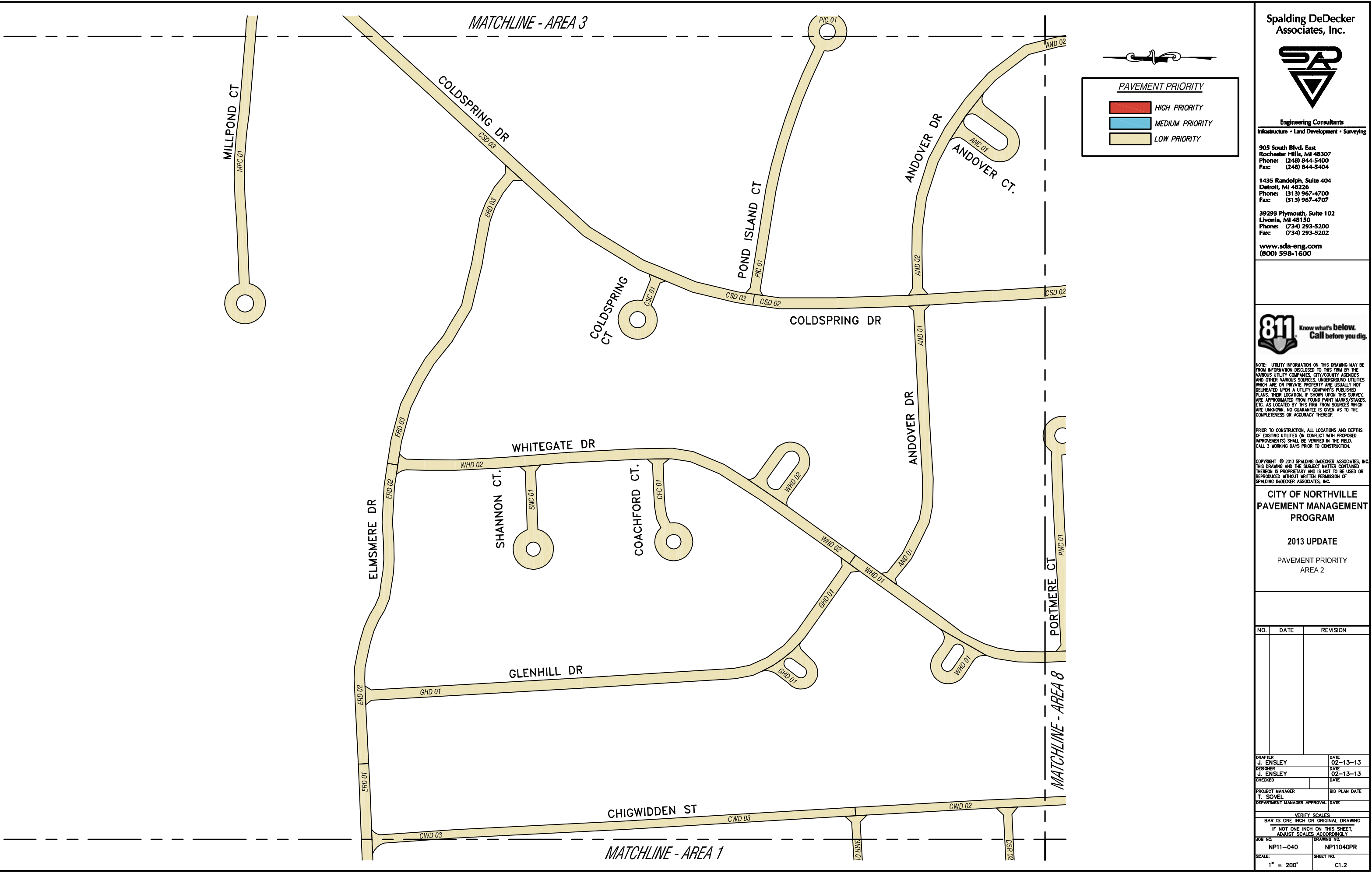
**811** Know what's below.  
Call before you dig.

COPYRIGHT © 2013 SPALDING DeDECKER ASSOCIATES, INC.  
THIS DRAWING AND THE SUBJECT MATTER CONTAINED  
THEREON IS PROPRIETARY AND IS NOT TO BE USED OR  
REPRODUCED WITHOUT WRITTEN PERMISSION OF  
SPALDING DeDECKER ASSOCIATES, INC.

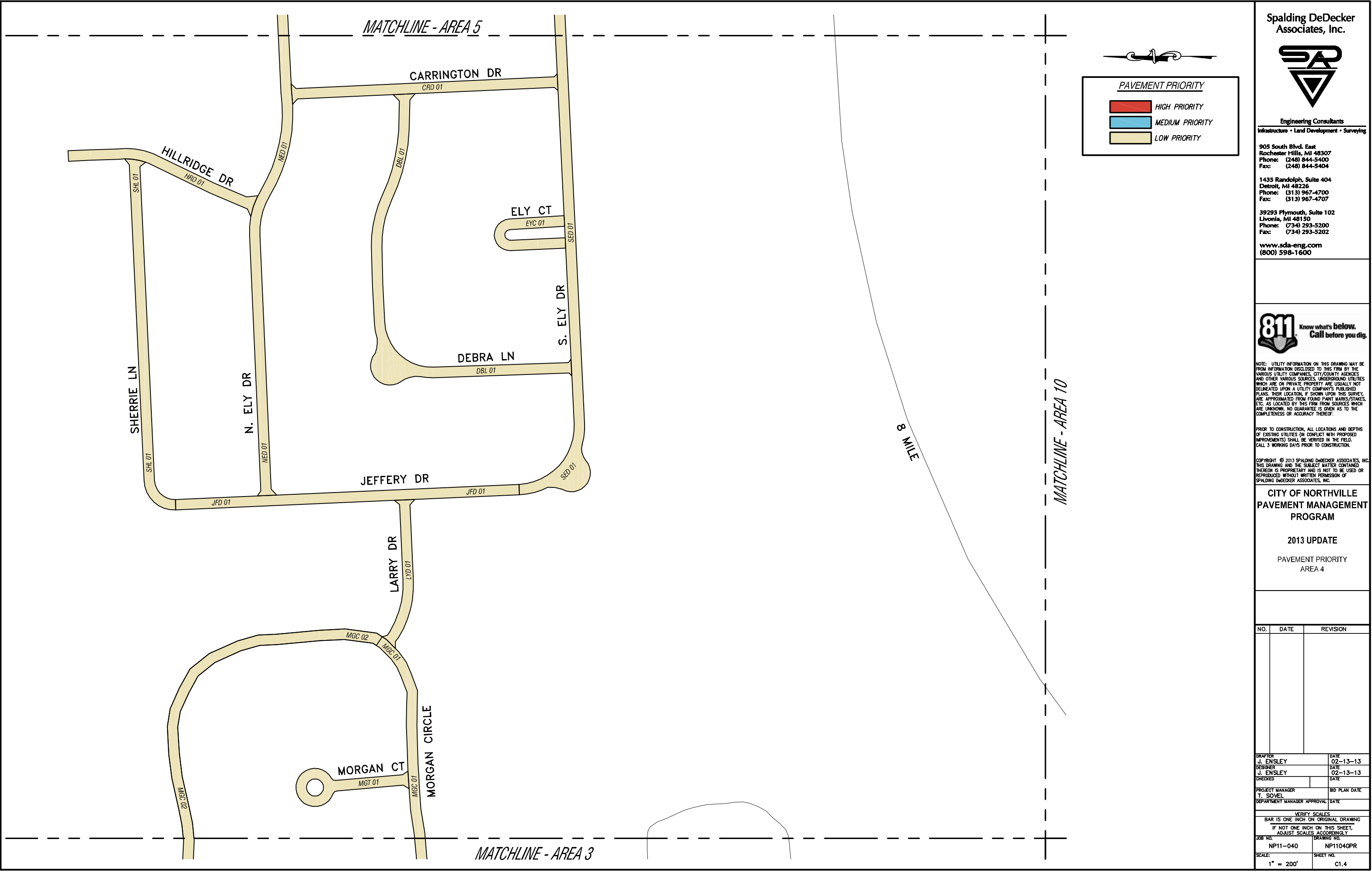
PAVEMENT PRIORITY  
AREA 1

NO.	DATE	REVISION

DRAFTER J. ENSLEY		DATE 02-13-13	
DESIGNER J. ENSLEY		DATE 02-13-13	
CHECKED		DATE	
PROJECT MANAGER T. SOVEL		BID PLAN DATE	
DEPARTMENT MANAGER APPROVAL		DATE	
<p align="center"><b>VERIFY SCALES</b></p> <p align="center">BAR IS ONE INCH ON ORIGINAL DRAWING</p> <p align="center">IF NOT ONE INCH ON THIS SHEET, ADJUST SCALES ACCORDINGLY</p>			
JOB NO. NP11-040		DRAWING NO. NP11040PR	
SCALE: 1" = 200'		SHEET NO. C1.1	







Spalding DeDecker  
Associates, Inc.



Engineering Consultants  
Infrastructure • Land Development • Surveying

905 South Blvd. East  
Rochester Hills, MI 48307  
Phone: (248) 844-5400  
Fax: (248) 844-5404

1435 Randolph, Suite 404  
Detroit, MI 48226  
Phone: (313) 967-4700  
Fax: (313) 967-4707

39293 Plymouth, Suite 102  
Livonia, MI 48150  
Phone: (734) 293-5200  
Fax: (734) 293-5202

[www.sda-eng.com](http://www.sda-eng.com)  
(800) 598-1600



NOTE: UTILITY INFORMATION ON THIS DRAWING MAY BE FROM INFORMATION DISCLOSED TO THIS FIRM BY THE VARIOUS UTILITY COMPANIES, CITY/COUNTY AGENCIES AND OTHER VARIOUS SOURCES. UNDERGROUND UTILITIES WHICH ARE ON PRIVATE PROPERTY ARE USUALLY NOT DELINEATED UPON A UTILITY COMPANY'S PUBLISHED PLANS. THEIR LOCATION, IF SHOWN UPON THIS SURVEY, ARE APPROXIMATED FROM FOUND PAINT MARKS/STAKES, ETC. AS LOCATED BY THIS FIRM FROM SOURCES WHICH ARE UNKNOWN. NO GUARANTEE IS GIVEN AS TO THE COMPLETENESS OR ACCURACY THEREOF.

PRIOR TO CONSTRUCTION, ALL LOCATIONS AND DEPTHS OF EXISTING UTILITIES (IN CONFLICT WITH PROPOSED IMPROVEMENTS) SHALL BE VERIFIED IN THE FIELD. CALL 3 WORKING DAYS PRIOR TO CONSTRUCTION.

COPYRIGHT © 2013 SPALDING DEDECKER ASSOCIATES, INC. THIS DRAWING AND THE SUBJECT MATTER CONTAINED THEREON IS PROPRIETARY AND IS NOT TO BE USED OR REPRODUCED WITHOUT WRITTEN PERMISSION OF SPALDING DEDECKER ASSOCIATES, INC.

**CITY OF NORTHVILLE  
PAVEMENT MANAGEMENT  
PROGRAM**

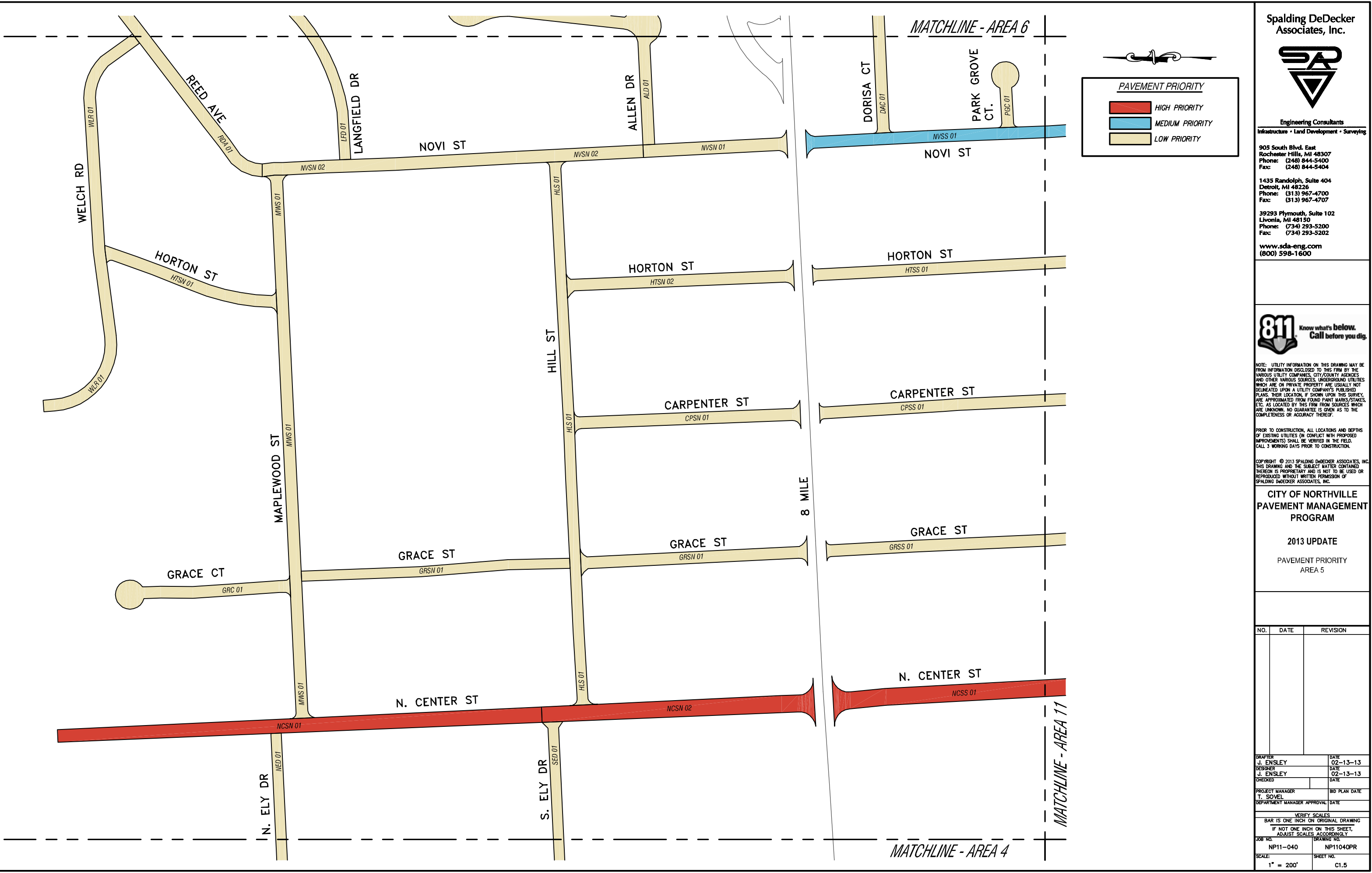
**2013 UPDATE**

**PAVEMENT PRIORITY  
AREA 4**

NO.	DATE	REVISION

DRAFTER J. ENSLEY	DATE 02-13-13
DESIGNER J. ENSLEY	DATE 02-13-13
CHECKED	DATE
PROJECT MANAGER T. SOVEL	BID PLAN DATE
DEPARTMENT MANAGER APPROVAL	DATE

VERIFY SCALES BAR IS ONE INCH ON ORIGINAL DRAWING IF NOT ONE INCH ON THIS SHEET, ADJUST SCALES ACCORDINGLY	
JOB NO. NP11-040	DRAWING NO. NP11040PR
SCALE: 1" = 200'	SHEET NO. C1.4



Spalding DeDecker Associates, Inc.



Engineering Consultants  
Infrastructure • Land Development • Surveying

905 South Blvd. East  
Rochester Hills, MI 48307  
Phone: (248) 844-5400  
Fax: (248) 844-5404

1435 Randolph, Suite 404  
Detroit, MI 48226  
Phone: (313) 967-4700  
Fax: (313) 967-4707

39293 Plymouth, Suite 102  
Livonia, MI 48150  
Phone: (734) 293-5200  
Fax: (734) 293-5202

www.sda-eng.com  
(800) 598-1600



NOTE: UTILITY INFORMATION ON THIS DRAWING MAY BE FROM INFORMATION DISCLOSED TO THIS FIRM BY THE VARIOUS UTILITY COMPANIES, CITY/COUNTY AGENCIES AND OTHER VARIOUS SOURCES. UNDERGROUND UTILITIES WHICH ARE ON PRIVATE PROPERTY ARE USUALLY NOT DELINEATED UPON A UTILITY COMPANY'S PUBLISHED PLANS. THEIR LOCATION, IF SHOWN UPON THIS SURVEY, ARE APPROXIMATED FROM FOUND PAINT MARKS/STAKES, ETC. AS LOCATED BY THIS FIRM FROM SOURCES WHICH ARE UNKNOWN. NO GUARANTEE IS GIVEN AS TO THE COMPLETENESS OR ACCURACY THEREOF.

PRIOR TO CONSTRUCTION, ALL LOCATIONS AND DEPTHS OF EXISTING UTILITIES (IN CONFLICT WITH PROPOSED IMPROVEMENTS) SHALL BE VERIFIED IN THE FIELD. CALL 3 WORKING DAYS PRIOR TO CONSTRUCTION.

COPYRIGHT © 2013 SPALDING DEDecker ASSOCIATES, INC. THIS DRAWING AND THE SUBJECT MATTER CONTAINED THEREON IS PROPRIETARY AND IS NOT TO BE USED OR REPRODUCED WITHOUT WRITTEN PERMISSION OF SPALDING DEDecker ASSOCIATES, INC.

### CITY OF NORTHVILLE PAVEMENT MANAGEMENT PROGRAM

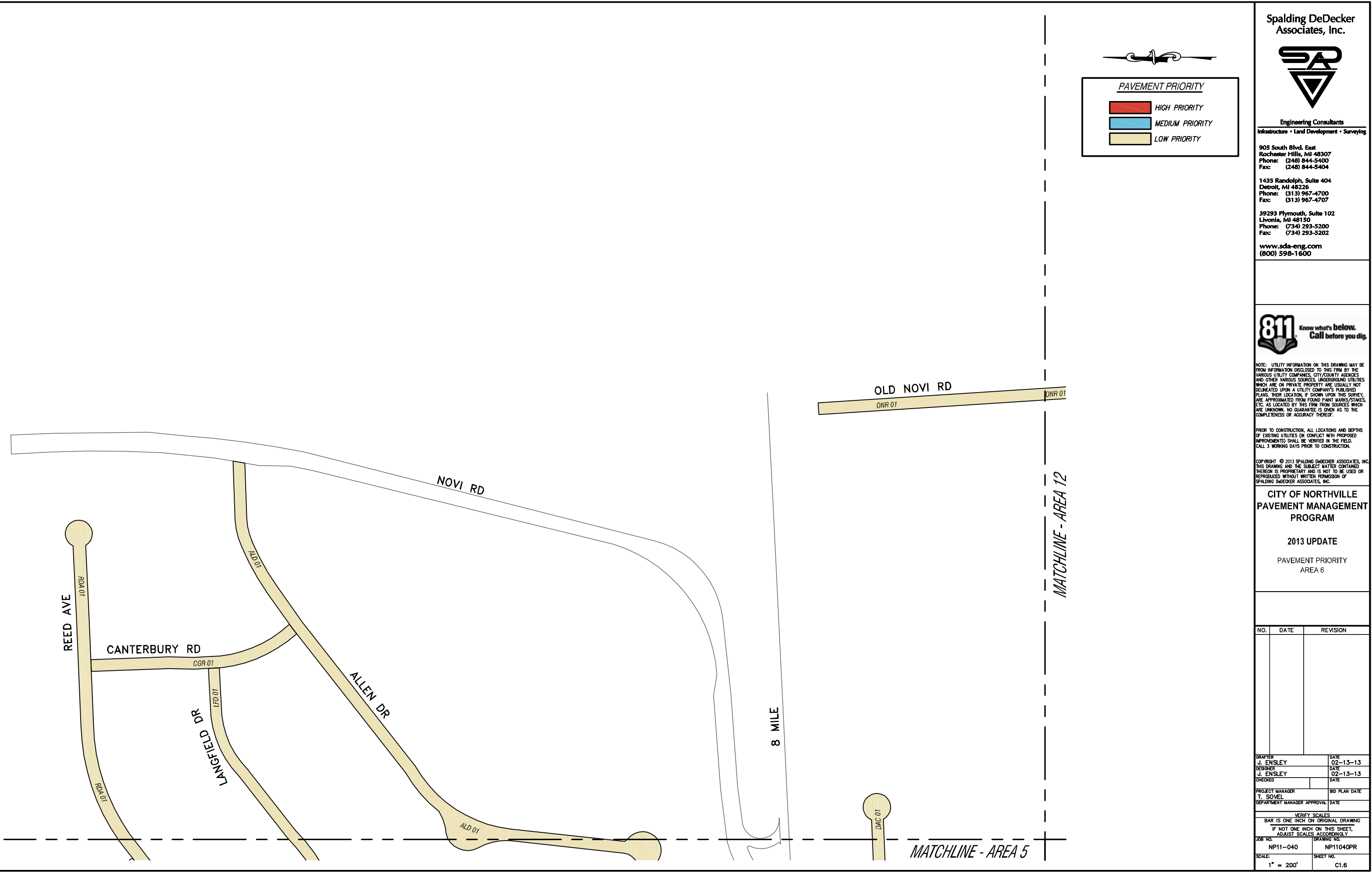
2013 UPDATE

PAVEMENT PRIORITY  
AREA 5

NO.	DATE	REVISION

DRAFTER J. ENSLEY	DATE 02-13-13
DESIGNER J. ENSLEY	DATE 02-13-13
CHECKED	DATE
PROJECT MANAGER T. SOVEL	BID PLAN DATE
DEPARTMENT MANAGER APPROVAL	DATE
VERIFY SCALES BAR IS ONE INCH ON ORIGINAL DRAWING IF NOT ONE INCH ON THIS SHEET, ADJUST SCALES ACCORDINGLY	
JOB NO. NP11-040	DRAWING NO. NP11040PR
SCALE: 1" = 200'	SHEET NO. C1.5





Spalding DeDecker  
Associates, Inc.



Engineering Consultants  
Infrastructure • Land Development • Surveying

905 South Blvd. East  
Rochester Hills, MI 48307  
Phone: (248) 844-5400  
Fax: (248) 844-5404

1435 Randolph, Suite 404  
Detroit, MI 48226  
Phone: (313) 967-4700  
Fax: (313) 967-4707

39293 Plymouth, Suite 102  
Livonia, MI 48150  
Phone: (734) 293-5200  
Fax: (734) 293-5202

www.sda-eng.com  
(800) 598-1600



NOTE: UTILITY INFORMATION ON THIS DRAWING MAY BE FROM INFORMATION DISCLOSED TO THIS FIRM BY THE VARIOUS UTILITY COMPANIES, CITY/COUNTY AGENCIES AND OTHER VARIOUS SOURCES. UNDERGROUND UTILITIES WHICH ARE ON PRIVATE PROPERTY ARE USUALLY NOT DELINEATED UPON A UTILITY COMPANY'S PUBLISHED PLANS. THEIR LOCATION, IF SHOWN UPON THIS SURVEY, ARE APPROXIMATED FROM FOUND PAINT MARKS/STAKES, ETC. AS LOCATED BY THIS FIRM FROM SOURCES WHICH ARE UNKNOWN. NO GUARANTEE IS GIVEN AS TO THE COMPLETENESS OR ACCURACY THEREOF.

PRIOR TO CONSTRUCTION, ALL LOCATIONS AND DEPTHS OF EXISTING UTILITIES (IN CONFLICT WITH PROPOSED IMPROVEMENTS) SHALL BE VERIFIED IN THE FIELD. CALL 3 WORKING DAYS PRIOR TO CONSTRUCTION.

COPYRIGHT © 2013 SPALDING DEDECKER ASSOCIATES, INC. THIS DRAWING AND THE SUBJECT MATTER CONTAINED THEREON IS PROPRIETARY AND IS NOT TO BE USED OR REPRODUCED WITHOUT WRITTEN PERMISSION OF SPALDING DEDECKER ASSOCIATES, INC.

CITY OF NORTHVILLE  
PAVEMENT MANAGEMENT  
PROGRAM

2013 UPDATE

PAVEMENT PRIORITY  
AREA 6

NO.	DATE	REVISION

DRAFTER J. ENSLEY	DATE 02-13-13
DESIGNER J. ENSLEY	DATE 02-13-13
CHECKED	DATE
PROJECT MANAGER T. SOVEL	BID PLAN DATE
DEPARTMENT MANAGER APPROVAL	DATE
VERIFY SCALES BAR IS ONE INCH ON ORIGINAL DRAWING IF NOT ONE INCH ON THIS SHEET, ADJUST SCALES ACCORDINGLY	
JOB NO. NP11-040	DRAWING NO. NP11040PR
SCALE: 1" = 200'	SHEET NO. C1.6





**905 South Blvd. East  
Rochester Hills, MI 48307  
Phone: (248) 844-5400  
Fax: (248) 844-5404**

**1435 Randolph, Suite 404  
Detroit, MI 48226  
Phone: (313) 967-4700  
Fax: (313) 967-4707**

**39293 Plymouth, Suite 102  
Livonia, MI 48150  
Phone: (734) 293-5200  
Fax: (734) 293-5202**

**www.sda-eng.com**  
**(800) 598-1600**



NOTE: UTILITY INFORMATION ON THIS DRAWING MAY BE FROM INFORMATION DISCLOSED TO THIS FIRM BY THE VARIOUS UTILITY COMPANIES, CITY/COUNTY AGENCIES AND OTHER VARIOUS SOURCES. UNDERGROUND UTILITIES WHICH ARE ON PRIVATE PROPERTY ARE USUALLY NOT DELINEATED UPON A UTILITY COMPANY'S PUBLISHED PLANS. THEIR LOCATION, IF SHOWN UPON THIS SURVEY, ARE APPROXIMATED FROM FOUND PAINT MARKS/STAKES, ETC. AS LOCATED BY THIS FIRM FROM SOURCES WHICH ARE UNKNOWN. NO GUARANTEE IS GIVEN AS TO THE COMPLETENESS OR ACCURACY THEREOF.

PRIOR TO CONSTRUCTION, ALL LOCATIONS AND DEPTHS OF EXISTING UTILITIES (IN CONFLICT WITH PROPOSED IMPROVEMENTS) SHALL BE VERIFIED IN THE FIELD. CALL 3 WORKING DAYS PRIOR TO CONSTRUCTION.

COPYRIGHT © 2013 SPALDING DeDECKER ASSOCIATES, INC.  
THIS DRAWING AND THE SUBJECT MATTER CONTAINED  
THEREON IS PROPRIETARY AND IS NOT TO BE USED OR  
REPRODUCED WITHOUT WRITTEN PERMISSION OF  
SPALDING DeDECKER ASSOCIATES, INC.

**CITY OF NORTHVILLE  
PAVEMENT MANAGEMENT  
PROGRAM**

## 2013 UPDATE

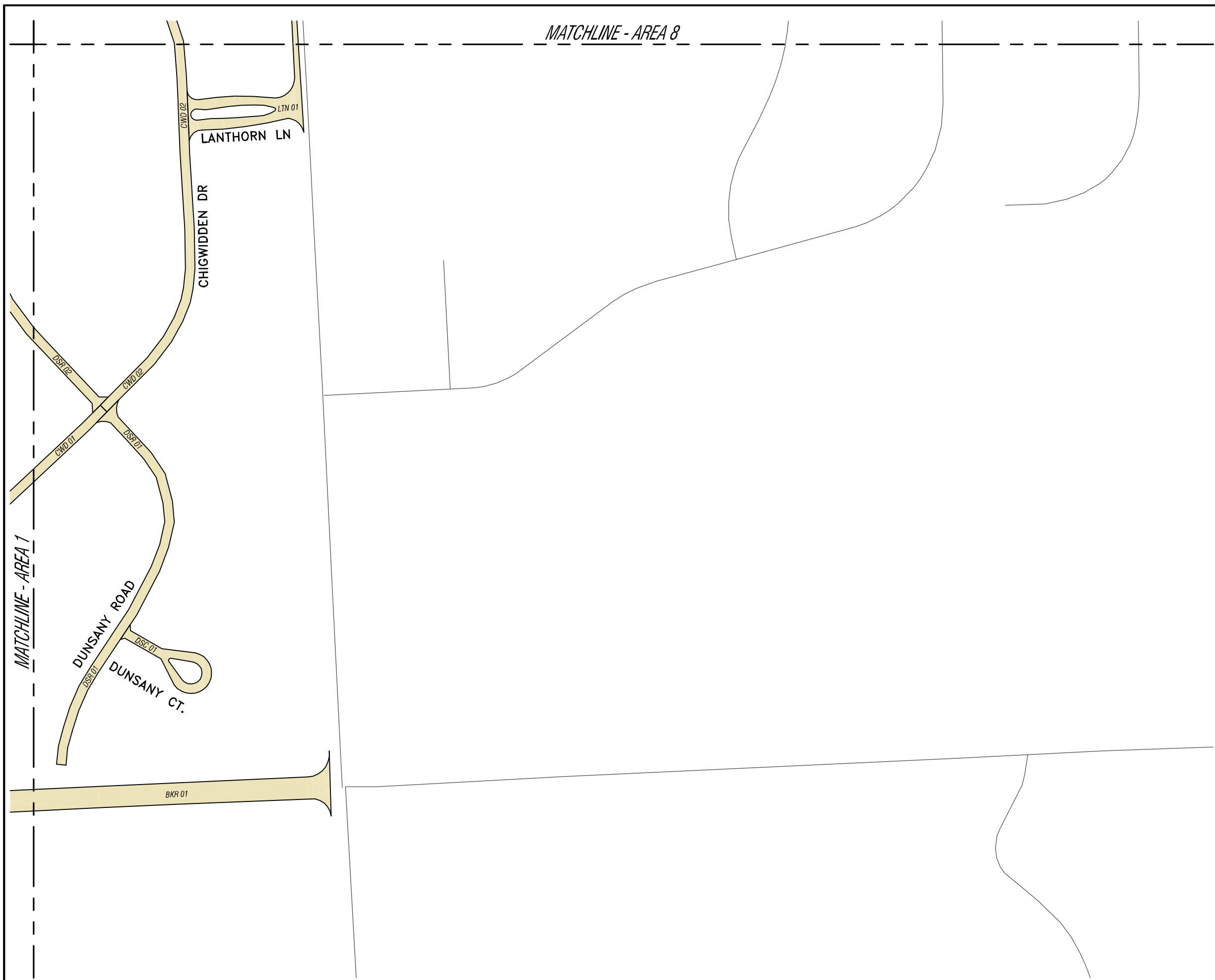
PAVEMENT PRIORITY  
AREA 7

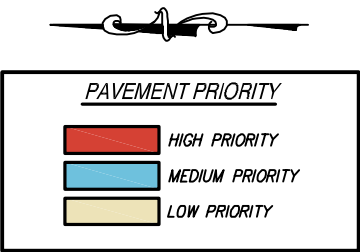
NO.	DATE	REVISION

DRAFTER J. ENSLEY		DATE 02-13-13
DESIGNER J. ENSLEY		DATE 02-13-13
CHECKED		DATE
PROJECT MANAGER T. SOVEL		BID PLAN DATE
DEPARTMENT MANAGER APPROVAL		DATE

VERIFY SCALES  
BAR IS ONE INCH ON ORIGINAL DRAWING  
IF NOT ONE INCH ON THIS SHEET,  
ADJUST SCALES ACCORDINGLY

JOB NO. NP11-040	DRAWING NO. NP11040PR
SCALE: 1" = 200'	SHEET NO. C1.7





**905 South Blvd. East  
Rochester Hills, MI 48307  
Phone: (248) 844-5400  
Fax: (248) 844-5404**

**1435 Randolph, Suite 404  
Detroit, MI 48226  
Phone: (313) 967-4700  
Fax: (313) 967-4707**

**39293 Plymouth, Suite 10  
Livonia, MI 48150  
Phone: (734) 293-5200  
Fax: (734) 293-5202**

**www.sda-eng.com**  
**(800) 598-1600**



NOTE: UTILITY INFORMATION ON THIS DRAWING MAY BE OBTAINED FROM INFORMATION DISCLOSED TO THIS FIRM BY THE VARIOUS UTILITY COMPANIES, CITY/COUNTY AGENCIES AND OTHER VARIOUS SOURCES. UNDERGROUND UTILITIES WHICH ARE ON PRIVATE PROPERTY ARE USUALLY NOT DELINEATED UPON A UTILITY COMPANY'S PUBLISHED PLANS. THEIR LOCATION, IF SHOWN UPON THIS SURVEY, ARE APPROXIMATED FROM FOLD POINT MARKS/STAKES, ETC. AS LOCATED BY THIS FIRM FROM SOURCES WHICH ARE UNKNOWN. NO GUARANTEE IS GIVEN AS TO THE COMPLETENESS OR ACCURACY THEREOF.

PRIOR TO CONSTRUCTION, ALL LOCATIONS AND DEPTHS OF EXISTING UTILITIES (IN CONFLICT WITH PROPOSED IMPROVEMENTS) SHALL BE VERIFIED IN THE FIELD. CALL 3 WORKING DAYS PRIOR TO CONSTRUCTION.

COPYRIGHT © 2013 SPALDING DeDECKER ASSOCIATES, INC.  
THIS DRAWING AND THE SUBJECT MATTER CONTAINED  
THEREON IS PROPRIETARY AND IS NOT TO BE USED OR  
REPRODUCED WITHOUT WRITTEN PERMISSION OF  
SPALDING DeDECKER ASSOCIATES, INC.

**CITY OF NORTHVILLE  
PAVEMENT MANAGEMENT  
PROGRAM**

## 2013 UPDATE

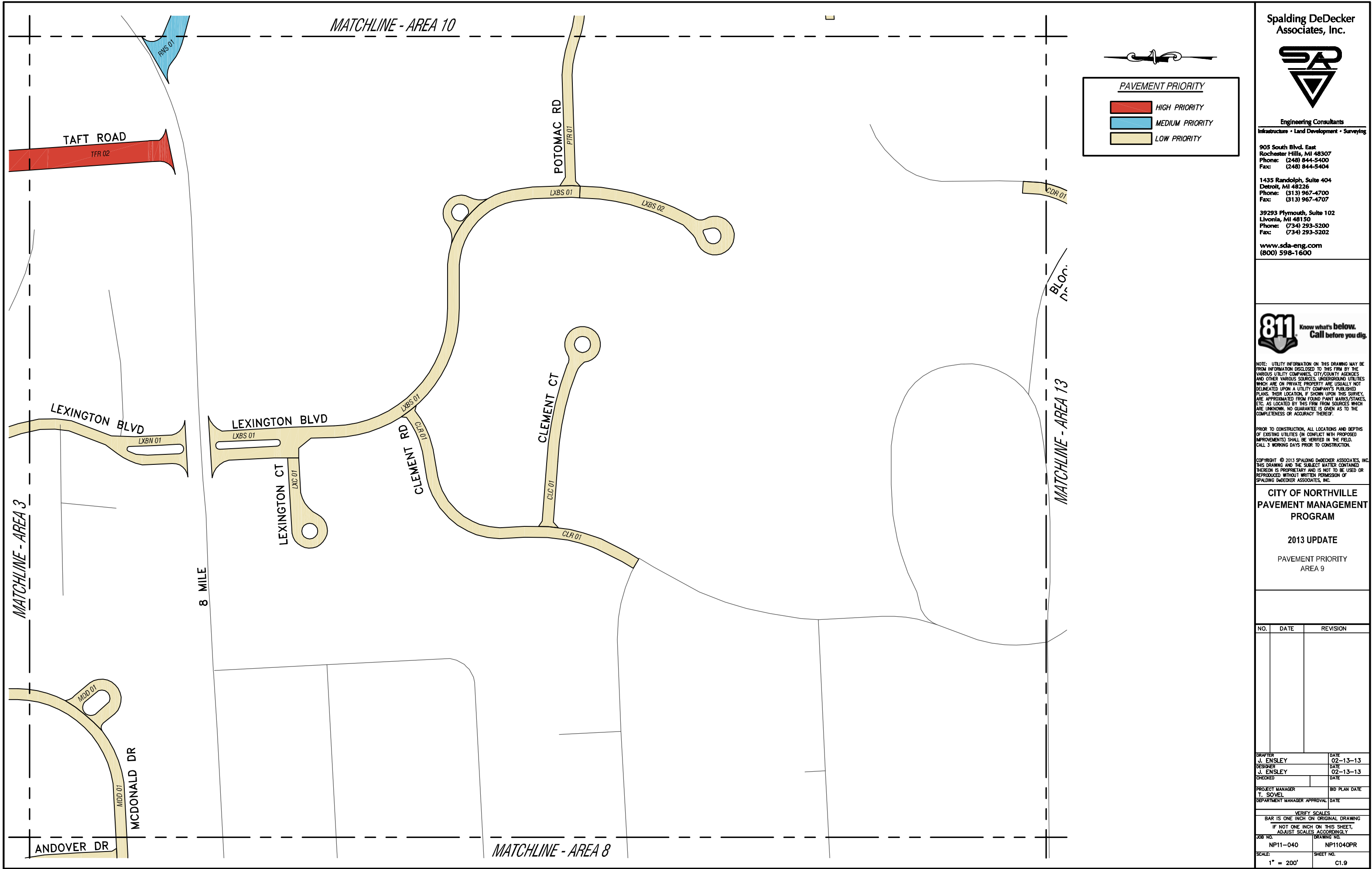
PAVEMENT PRIORITY  
AREA 8

NO.	DATE	REVISION

DRAFTER J. ENSLEY		DATE 02-13-13
DESIGNER J. ENSLEY		DATE 02-13-13
CHECKED		DATE
PROJECT MANAGER T. SOVEL		BID PLAN DATE
DEPARTMENT MANAGER APPROVAL		DATE

VERIFY SCALES  
BAR IS ONE INCH ON ORIGINAL DRAWING  
IF NOT ONE INCH ON THIS SHEET,  
ADJUST SCALES ACCORDINGLY

JOB NO. NP11-040	DRAWING NO. NP11040PR
SCALE: 1" = 200'	SHEET NO. C1.8



Spalding DeDecker Associates, Inc.



Engineering Consultants  
Infrastructure • Land Development • Surveying

905 South Blvd. East  
Rochester Hills, MI 48307  
Phone: (248) 844-5400  
Fax: (248) 844-5404

1435 Randolph, Suite 404  
Detroit, MI 48226  
Phone: (313) 967-4700  
Fax: (313) 967-4707

39293 Plymouth, Suite 102  
Livonia, MI 48150  
Phone: (734) 293-5200  
Fax: (734) 293-5202

www.sda-eng.com  
(800) 598-1600



NOTE: UTILITY INFORMATION ON THIS DRAWING MAY BE FROM INFORMATION DISCLOSED TO THIS FIRM BY THE VARIOUS UTILITY COMPANIES, CITY/COUNTY AGENCIES AND OTHER VARIOUS SOURCES. UNDERGROUND UTILITIES WHICH ARE ON PRIVATE PROPERTY ARE USUALLY NOT DELINEATED UPON A UTILITY COMPANY'S PUBLISHED PLANS. THEIR LOCATION, IF SHOWN UPON THIS SURVEY, ARE APPROXIMATED FROM FOUND PAINT MARKS/STAKES, ETC. AS LOCATED BY THIS FIRM FROM SOURCES WHICH ARE UNKNOWN. NO GUARANTEE IS GIVEN AS TO THE COMPLETENESS OR ACCURACY THEREOF.

PRIOR TO CONSTRUCTION, ALL LOCATIONS AND DEPTHS OF EXISTING UTILITIES (IN CONFLICT WITH PROPOSED IMPROVEMENTS) SHALL BE VERIFIED IN THE FIELD. CALL 3 WORKING DAYS PRIOR TO CONSTRUCTION.

COPYRIGHT © 2013 SPALDING DEDECKER ASSOCIATES, INC. THIS DRAWING AND THE SUBJECT MATTER CONTAINED THEREON IS PROPRIETARY AND IS NOT TO BE USED OR REPRODUCED WITHOUT WRITTEN PERMISSION OF SPALDING DEDECKER ASSOCIATES, INC.

### CITY OF NORTHVILLE PAVEMENT MANAGEMENT PROGRAM

2013 UPDATE

PAVEMENT PRIORITY  
AREA 9

NO.	DATE	REVISION

DRAFTER J. ENSLEY	DATE 02-13-13
DESIGNER J. ENSLEY	DATE 02-13-13
CHECKED	DATE
PROJECT MANAGER T. SOVEL	BID PLAN DATE
DEPARTMENT MANAGER APPROVAL	DATE

VERIFY SCALES BAR IS ONE INCH ON ORIGINAL DRAWING IF NOT ONE INCH ON THIS SHEET, ADJUST SCALES ACCORDINGLY	
JOB NO. NP11-040	DRAWING NO. NP11040PR
SCALE: 1" = 200'	SHEET NO. C1.9

MATCHLINE - AREA 4

MATCHLINE - AREA 11

MATCHLINE - AREA 14

MATCHLINE - AREA 9



PAVEMENT PRIORITY

- HIGH PRIORITY
- MEDIUM PRIORITY
- LOW PRIORITY



Spalding DeDecker Associates, Inc.



Engineering Consultants  
Infrastructure • Land Development • Surveying

905 South Blvd. East  
Rochester Hills, MI 48307  
Phone: (248) 844-5400  
Fax: (248) 844-5404

1435 Randolph, Suite 404  
Detroit, MI 48226  
Phone: (313) 967-4700  
Fax: (313) 967-4707

39293 Plymouth, Suite 102  
Livonia, MI 48150  
Phone: (734) 293-5200  
Fax: (734) 293-5202

www.sda-eng.com  
(800) 598-1600



NOTE: UTILITY INFORMATION ON THIS DRAWING MAY BE FROM INFORMATION DISCLOSED TO THIS FIRM BY THE VARIOUS UTILITY COMPANIES, CITY/COUNTY AGENCIES AND OTHER VARIOUS SOURCES. UNDERGROUND UTILITIES WHICH ARE ON PRIVATE PROPERTY ARE USUALLY NOT DELINEATED UPON A UTILITY COMPANY'S PUBLISHED PLANS. THEIR LOCATION, IF SHOWN UPON THIS SURVEY, ARE APPROXIMATED FROM FOUND PAINT MARKS/STAKES, ETC. AS LOCATED BY THIS FIRM FROM SOURCES WHICH ARE UNKNOWN. NO GUARANTEE IS GIVEN AS TO THE COMPLETENESS OR ACCURACY THEREOF.

PRIOR TO CONSTRUCTION, ALL LOCATIONS AND DEPTHS OF EXISTING UTILITIES (IN CONFLICT WITH PROPOSED IMPROVEMENTS) SHALL BE VERIFIED IN THE FIELD. CALL 3 WORKING DAYS PRIOR TO CONSTRUCTION.

COPYRIGHT © 2013 SPALDING DEDECKER ASSOCIATES, INC. THIS DRAWING AND THE SUBJECT MATTER CONTAINED THEREON IS PROPRIETARY AND IS NOT TO BE USED OR REPRODUCED WITHOUT WRITTEN PERMISSION OF SPALDING DEDECKER ASSOCIATES, INC.

CITY OF NORTHVILLE  
PAVEMENT MANAGEMENT  
PROGRAM

2013 UPDATE

PAVEMENT PRIORITY  
AREA 10

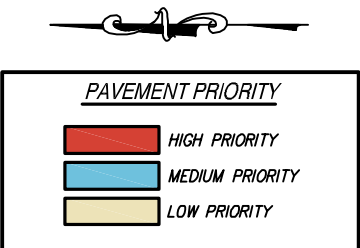
NO.	DATE	REVISION

DRAFTER J. ENSLEY	DATE 02-13-13
DESIGNER J. ENSLEY	DATE 02-13-13
CHECKED	DATE
PROJECT MANAGER T. SOVEL	BID PLAN DATE
DEPARTMENT MANAGER APPROVAL	DATE

VERIFY SCALES BAR IS ONE INCH ON ORIGINAL DRAWING IF NOT ONE INCH ON THIS SHEET, ADJUST SCALES ACCORDINGLY	
JOB NO. NP11-040	DRAWING NO. NP11040PR
SCALE: 1" = 200'	SHEET NO. C1.10

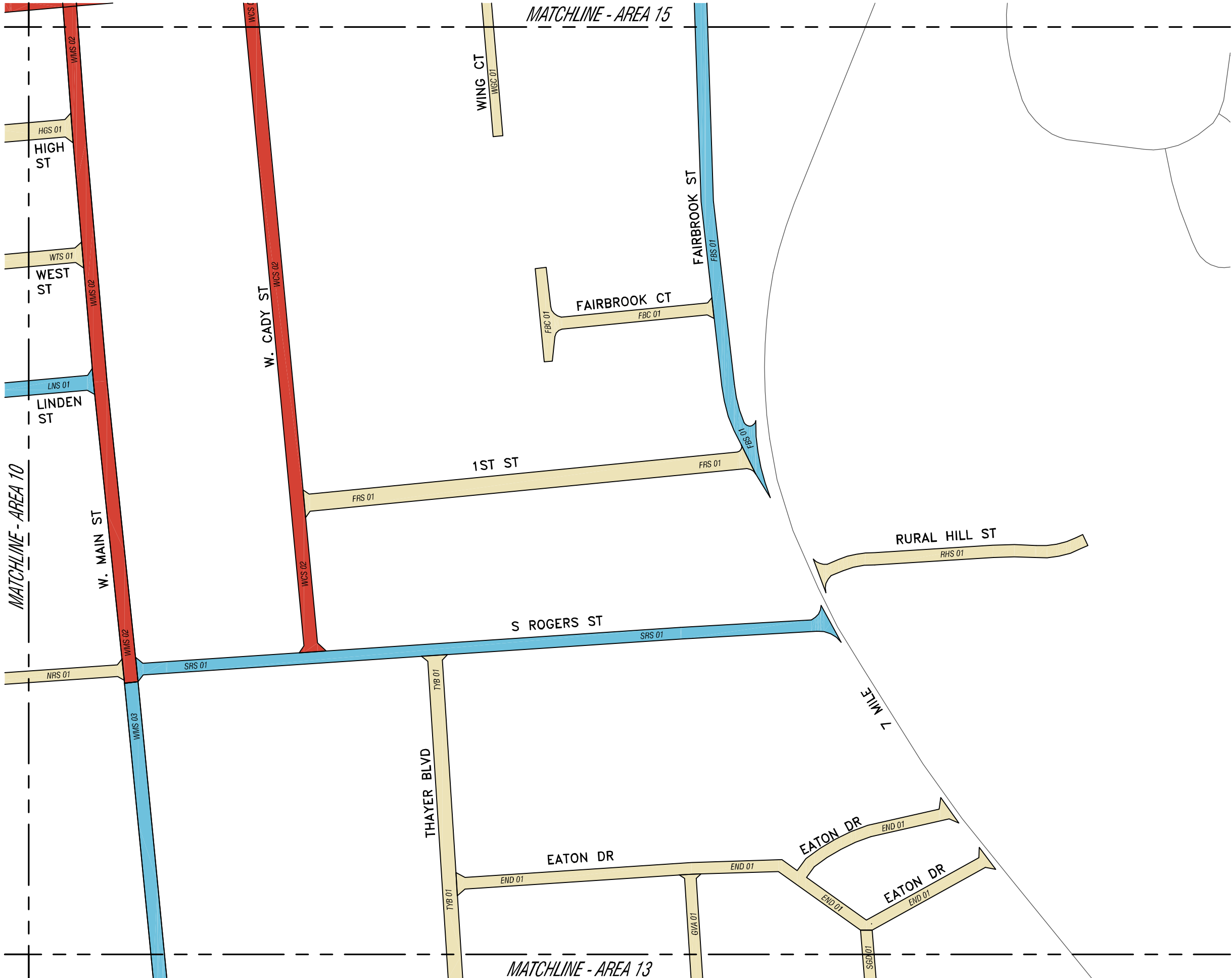






<p align="center"><b>VERIFY SCALES</b></p> <p align="center"><b>BAR IS ONE INCH ON ORIGINAL DRAWING</b></p> <p align="center"><b>IF NOT ONE INCH ON THIS SHEET,</b>  <b>ADJUST SCALES ACCORDINGLY</b></p>	
<p><b>JOB NO.</b></p> <p align="center"><b>NP11-040</b></p>	<p><b>DRAWING NO.</b></p> <p align="center"><b>NP11040PR</b></p>
<p><b>SCALE:</b></p> <p align="center"><b>1" = 200'</b></p>	<p><b>SHEET NO.</b></p> <p align="center"><b>C1.13</b></p>





**PAVEMENT PRIORITY**

HIGH PRIORITY

MEDIUM PRIORITY

LOW PRIORITY

Spalding DeDecker Associates, Inc.



Engineering Consultants  
Infrastructure • Land Development • Surveying

905 South Blvd. East  
Rochester Hills, MI 48307  
Phone: (248) 844-5400  
Fax: (248) 844-5404

1435 Randolph, Suite 404  
Detroit, MI 48226  
Phone: (313) 967-4700  
Fax: (313) 967-4707

39293 Plymouth, Suite 102  
Livonia, MI 48150  
Phone: (734) 293-5200  
Fax: (734) 293-5202

[www.sda-eng.com](http://www.sda-eng.com)  
(800) 598-1600



NOTE: UTILITY INFORMATION ON THIS DRAWING MAY BE FROM INFORMATION DISCLOSED TO THIS FIRM BY THE VARIOUS UTILITY COMPANIES, CITY/COUNTY AGENCIES AND OTHER VARIOUS SOURCES. UNDERGROUND UTILITIES WHICH ARE ON PRIVATE PROPERTY ARE USUALLY NOT DELINEATED UPON A UTILITY COMPANY'S PUBLISHED PLANS. THEIR LOCATION, IF SHOWN UPON THIS SURVEY, ARE APPROXIMATED FROM FOUND PAINT MARKS/STAKES, ETC. AS LOCATED BY THIS FIRM FROM SOURCES WHICH ARE UNKNOWN. NO GUARANTEE IS GIVEN AS TO THE COMPLETENESS OR ACCURACY THEREOF.

PRIOR TO CONSTRUCTION, ALL LOCATIONS AND DEPTHS OF EXISTING UTILITIES (IN CONFLICT WITH PROPOSED IMPROVEMENTS) SHALL BE VERIFIED IN THE FIELD. CALL 3 WORKING DAYS PRIOR TO CONSTRUCTION.

COPYRIGHT © 2013 SPALDING DEDECKER ASSOCIATES, INC. THIS DRAWING AND THE SUBJECT MATTER CONTAINED THEREON IS PROPRIETARY AND IS NOT TO BE USED OR REPRODUCED WITHOUT WRITTEN PERMISSION OF SPALDING DEDECKER ASSOCIATES, INC.

**CITY OF NORTHVILLE  
PAVEMENT MANAGEMENT  
PROGRAM**

2013 UPDATE

PAVEMENT PRIORITY  
AREA 14

NO.	DATE	REVISION

DRAFTER J. ENSLEY	DATE 02-13-13
DESIGNER J. ENSLEY	DATE 02-13-13
CHECKED	DATE
PROJECT MANAGER T. SOVEL	BID PLAN DATE
DEPARTMENT MANAGER APPROVAL	DATE
VERIFY SCALES BAR IS ONE INCH ON ORIGINAL DRAWING IF NOT ONE INCH ON THIS SHEET, ADJUST SCALES ACCORDINGLY	
JOB NO. NP11-040	DRAWING NO. NP11040PR
SCALE: 1" = 200'	SHEET NO. C1.14



